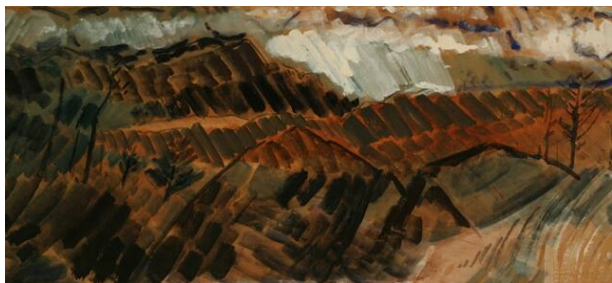


# Basic Detail Report

---



## Landscape

**Date**

1957

**Primary Maker**

Guy Anderson

**Medium**

Tempera on paper on panel

**Description**

Landscape with hill and several sparse tree forms. Broad and short brushstrokes (most diagonal) in black, brown, green, and white.

**Dimensions**

Overall: 15 7/8 x 35 3/4 in. (40.3 x 90.8 cm) Frame: 21 3/4 x 42 in. (55.2 x 106.7 cm)