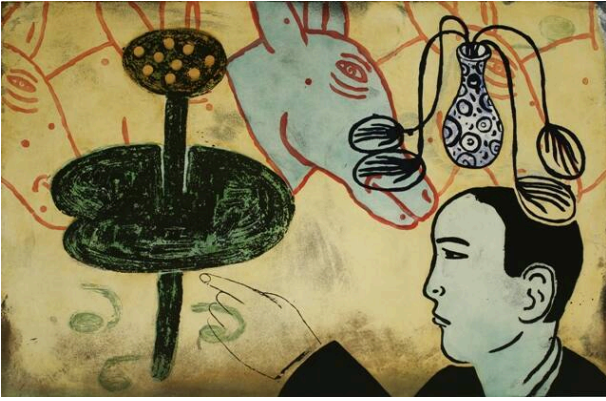


Basic Detail Report



The Conductor (proof)

Date

1997

Primary Maker

Fay Jones

Medium

Sugar lift and spitbite aquatint on paper

Description

Head and shoulders of a man in lower right corner pointing at plant-like object at left. A vase and flowers hover over the man's

head. Series of horse's heads outlined in red along the top margin. One is infilled in grayish-white. Per printer's notes this is a late state proof.

Dimensions

Sheet Overall: 40 1/4 x 54 in. (102.2 x 137.2 cm)