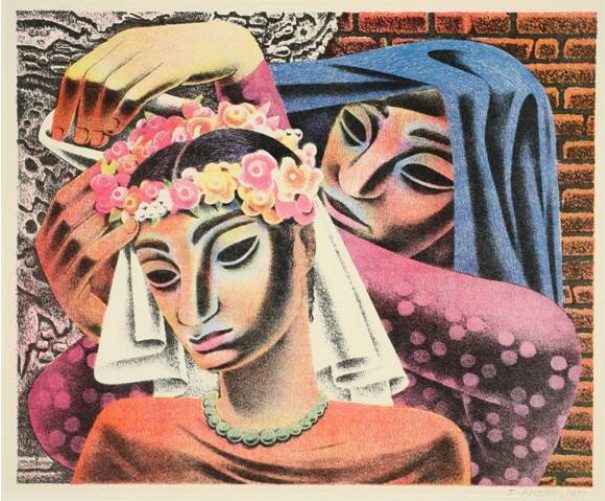


# Basic Detail Report

---



## Fiesta

### Date

1951

### Primary Maker

Emilio Amero

### Medium

Color lithograph on paper

### Description

Image of the heads and shoulders of two women both facing out toward the viewer. The woman in the foreground has on a pink dress and a floral wreath with veil attached. The woman behind her in a blue head scarf/shawl is helping adjust her veil. Both women have mask-like faces.

### Dimensions

Overall: 9 3/4 x 12 in. (24.8 x 30.5 cm) Mat Overall: 16 x 20 in. (40.6 x 50.8 cm)